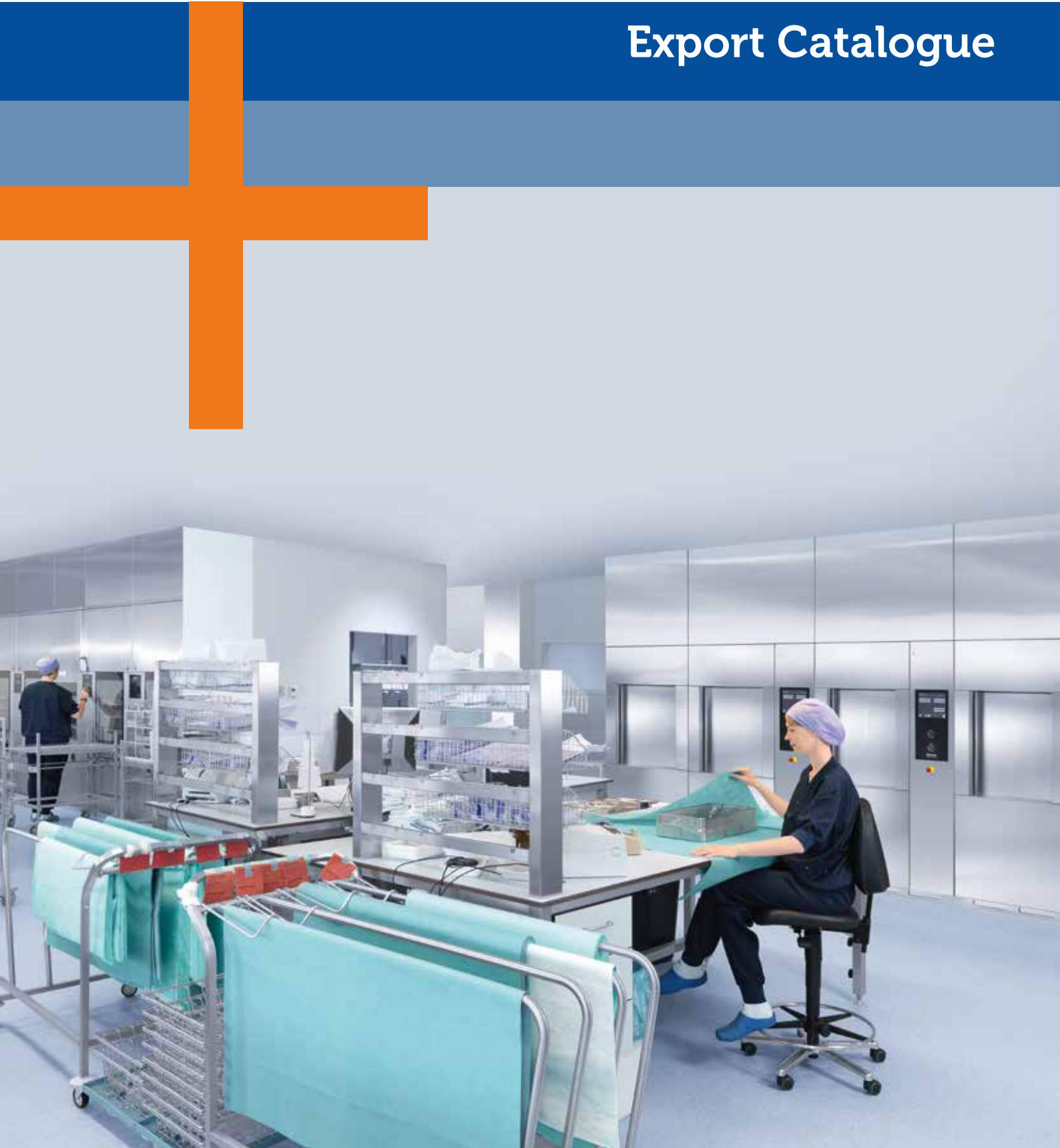


# Export Catalogue



# Interster International

Your partner for CSSD, Endoscopy and Investment Solutions

4

## Sterile Barrier System - Sterilisation Wrapping 6

Crêpe Sensitive	10
Interwrap	11
Secu-Wrap	12
Meatex	13
Interleaved Interwrap	14
Interleaved Secu-Wrap	15
Interleaved Meatex	16
Twin Wrap	17

## Sterile Barrier System - Pouches & Reels 19

Blue Seal flat pouches	20
Blue Seal gusseted pouches	21
Blue Seal flat reels	22
Blue Seal gusseted reels	22

## Chemical Indicators 23

Type 1	25
Type 2	26
Type 4	28
Type 5	28
Type 6	29
Chemical indicators for other sterilisation methods	30

## Protection & Moisture Absorption 31

Dustcover	32
Silicone mat	32
Instru Protector	33
Tray Liner	34
Inner Layer (Soaker sheet)	35





## CSSD & Endoscopy Accessories

36

Endoscope Brushes	37
Brushes for hollow instruments	39
Surface cleaning brushes	39
Drying towels	40
Sterilisation Markers	40
Steam labels	41
Medical label gun	42
3 line steam sterilisation labels	42
Masking tape	43
Sterilisation tape	43
Seal Check	44
Dye Penetration Tests	44
Tray identification labels	45
Container seals	45
Cable ties made of silicone	46
Registration card	47
Documentation system	47
Decontamination bags	48
Polypropylene trays	48

## Personal Protection Equipment (PPE)

49

Surgical caps	50
Surgical masks	51
FFP2 Full Face Protection Masks	51

## Investment Solutions

52

Stainless steel wire baskets	53
Stainless steel wire shelves	54
Stainless steel instrument trays	54
Stainless steel screen basket signs	55
Cleaning accessories	56





## Your partner for CSSD, Endoscopy and Investment Solutions

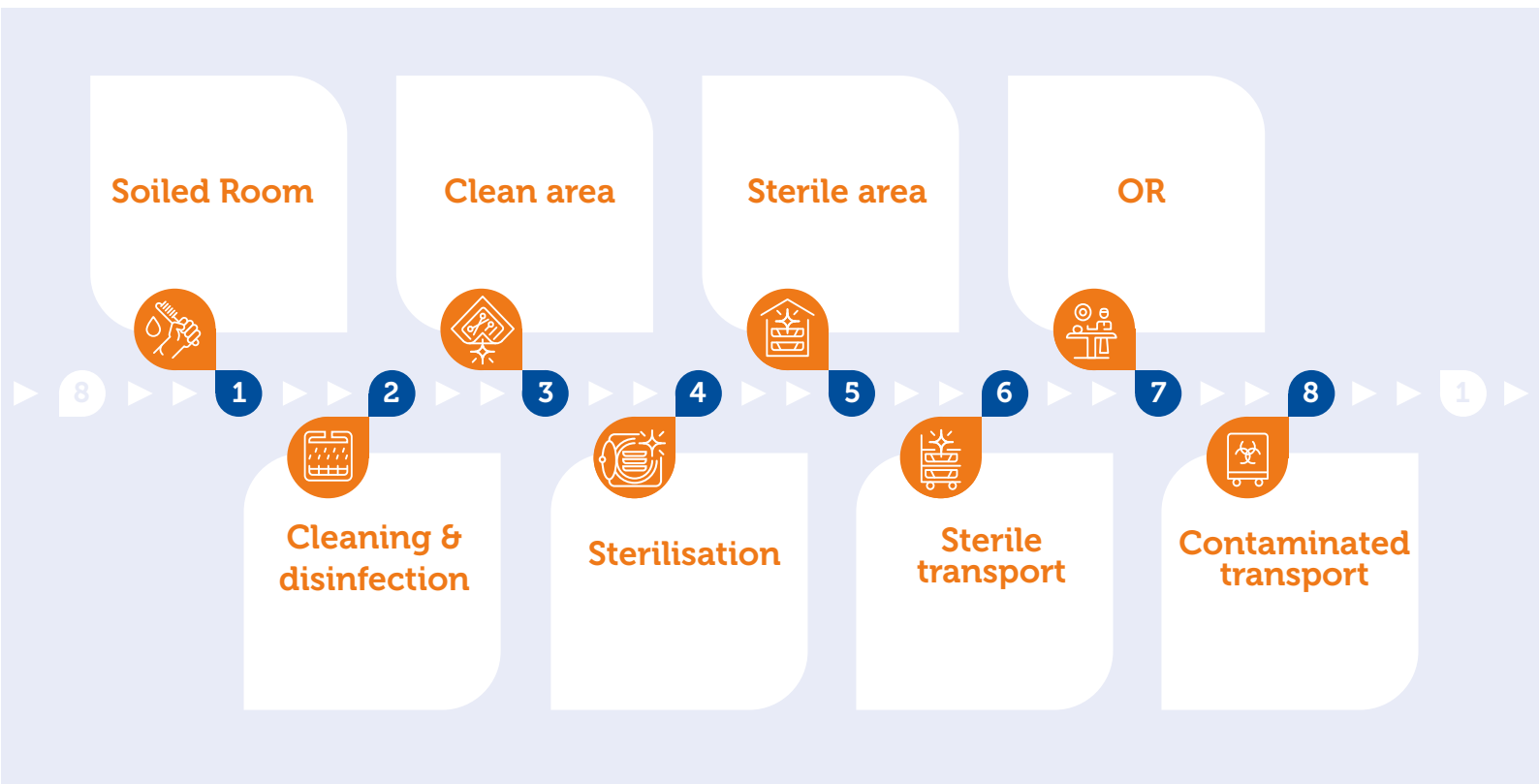
Over the years, the export business of Interster has grown rapidly, justifying our formal company name "Interster International B.V.". The Interster Bowie & Dick type tests, SMS and Wet-laid Non-Woven sterilization wrapping materials, chemical indicators (for steam, plasma, formaldehyde and EO processes) and high quality accessories are the products of choice in hospitals from Madrid to Beijing, and from Sydney to Durban.

- + As laws and regulations are continuously changing and higher quality standards become the norm, Interster has the experience and quality system to guarantee compliance of our products.
- + Your main concern as a distributor of medical devices will always be patient safety; with the Interster CSSD consumables you are contributing to the perfect quality of sterilized, properly packaged medical devices.
- + Interster International B.V. is your specialized partner for CSSD, also offering an increasingly extensive range of products for the Endoscopy and customer requiring products to support sterile logistics.

## Whatever you need... ask us

Interster International is a leading CSSD materials supplier in many markets, and has developed a comprehensive portfolio of consumables. We can support your needs in all phases of the CSSD process. For the export portfolio our focus lies on the cleaning, disinfection, packaging, sterilisation and transport/storage steps.

- + The extensive knowledge that Interster has in this specialized field offers assistance to many hospitals, allowing them to refine and improve the level of quality.
- + As an original manufacturer of chemical indicators, and as a high quality converter of sterilization wrapping materials Interster has been an innovative force for the development of ever better products.
- + Culminated in such products at the Bowie & Dick type autoclave test pack with a BSI Kitemark certificate, and our Meatex, Interwrap, and Secu-Wrap sterilization wrapping materials.





## Sterile Barrier Systems - Sterilisation Wrapping

Defined as “the minimum packaging configuration that provides a microbial barrier and allows aseptic presentation of the product unit at the point of use” a sterile barrier system is one of the most important safeguards allowing proper sterilization, transport and presentation of the medical device.

### **Interster sterilization packaging benefits include**

- + Conformity to ISO 11607-1 and EN 868-2
- + Ability to supply single, interleaved or sealed combinations of all materials
- + Available in boxes and pallet-boxes (“eco-boxes”) in many sizes
- + Alcohol repellence material available (Meatex Green and Interwrap)
- + High tearing strength and puncture resistance

### **Uses of wrapping materials**

As a long time manufacturer of sterilisation wrapping, Interster has built a balanced portfolio of wrapping materials. All of our wrapping materials are conform to all requirements under the Medical Device Regulation.

- + With our state-of-the-art hyper-clean manufacturing facility we are able to guarantee short lead times and high quality production.
- + We keep stock of a wide range of weights, sizes and combinations to ensure our customers’ needs are met at all times.
- + We can advise on what materials (crêpe, wet laid non-wovens, four or five layer SMS in any combination, in single, interleaved or Twin Wrap combinations) are most suitable to your situation and wishes.





### Single sheets (non-interleaved)

In some cases, such as when the sterilization wrapping sheets are used in combination with a sterilization container system, you can use single sheets. We can provide guidance on selecting the right materials, such as single sheets of Meatex HD Blue for added protection/strength, or Interwrap 335 for superior moisture absorption. Interster International can supply all types of sterilization wrapping materials (Crêpe Sensitive, Interwrap, Secu-Wrap and Meatex) as single sheets, and supply these in regular boxes or eco-boxes. We regularly supply sizes from 45 x 45 cm up to the largest sizes required, quite often as customer specific products. Contact your international account manager to discuss the possibilities.



### Interleaved wrapping (alternating two different wrapping materials in a single box)

Interster International manufactures interleaved sheets packed in single and eco-boxes. We can combine all different sterilization wrapping materials to supply the most cost effective, highest quality option. For instance: Meatex Heavy Duty Blue with Secu-Wrap Regular Light Green in cases where strength is required but alcohol repellence is not cost effective/required. The sheets are supplied interleaved, meaning the CSSD technician can simply wrap the sets using alternating blue and green sheets right out of the box. Our account manager can work with you to find the ideal weights, size and combination of materials for your requirements.



### Twin Wrap (sealed wrapping)

Over the years many CSSD's have transitioned from using separate (sequential) wraps to using sealed wraps. Advantages are a reduction of the time needed for wrapping as well as significantly reducing the physical stress for the CSSD technician. With additional training on how to assure aseptic presentation sealed wrapping can be a good option for you. In 2020 Interster International greatly expanded their Twin-Wrap portfolio, and now offers a complete range of weight combinations for all sets. Anything from light sets up to very heavy sets can now be packed safely with sealed materials of an appropriate strength. Your account manager is happy to speak to you about what materials suit your needs and to provide samples for testing.



All combinations/sizes can be discussed.





### Crêpe Sensitive

Cellulose fibers.

**Crêpe Sensitive, 60 g/m<sup>2</sup>**  
Suitable for light materials.



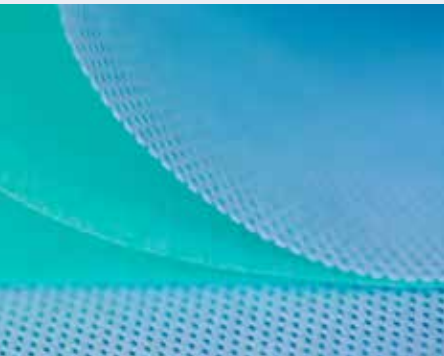
### Interwrap

Cellulose fibers,  
enhanced with polyester  
fibres and a binder.

**Interwrap 335, 52 g/m<sup>2</sup>**  
Suitable for light materials.

**Interwrap 340, 57 g/m<sup>2</sup>**  
Suitable for light materials.

**Interwrap 350, 67 g/m<sup>2</sup>**  
Suitable for heavier products and  
instrument trays (e.a. orthopaedic sets,  
omnittracts, etc).



### Secu-Wrap

4 layer polypropylene  
non-woven. SMMS  
(Spunbound, Meltblown,  
Meltblown, Spunbound)

**Secu-Wrap Standard 37 g/m<sup>2</sup>**  
Suitable for lighter materials.

**Secu-Wrap Regular 47 g/m<sup>2</sup>**  
For common use, such as light materials  
and instrument sets.

**Secu-Wrap Heavy Duty 55 g/m<sup>2</sup>**  
For heavy materials and instrumentsets  
(orthopaedic sets, omnitract, etc).

**Secu-Wrap All-in-One 80 g/m<sup>2</sup>**  
The most heavy quality. Suitable for very  
heavy instrument sets (size, weight, etc).



### Meatex

5 layer polypropylene  
non-woven. SSMMS  
(Spunbound, Spunbound,  
Meltblown, Meltblown,  
Spunbound).

**Meatex Standard 37 g/m<sup>2</sup>**  
Suitable for light materials.

**Meatex Regular 47 g/m<sup>2</sup>**  
Suitable for common use, such as light  
materials and instrument sets.

**Meatex Heavy Duty 55 g/m<sup>2</sup>**  
Suitable for heavier products and  
instrument sets

**Meatex Xtreme 75 g/m<sup>2</sup>**  
The strongest quality. Suitable for the  
heaviest sets or as protection during  
critical transport.

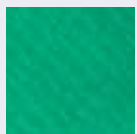






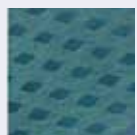
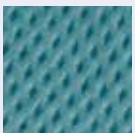
- + Conform EN-ISO 11607-1 and EN 868-2
- + Non-woven packaging material
- + Micrexed structure creates better drapeability

- + Steam
- + ETO
- + Formaldehyde
- ✗ Gas plasma
- + Gamma



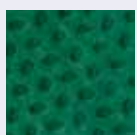
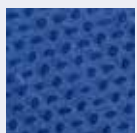
- + Conform EN-ISO-11607-1 and EN 868-2
- + Wet laid non-woven
- + 70% isopropyl-alcohol resistance
- + Excellent moisture absorption
- + High drapeability

- + Steam
- + ETO
- + Formaldehyde
- ✗ Gas plasma
- + Gamma



- + Conform EN-ISO-11607-1 and EN 868-2
- + Excellent liquid resistance
- + No shape memory
- + High elongation
- + High tearing strength

- + Steam
- + ETO
- + Formaldehyde
- + Gas plasma
- ✗ Gamma



- + Conform EN-ISO 11607-1 and EN 868-2
- + Very low memory
- + Excellent drapeability
- + 70% isopropyl-alcohol repellency (Reg. green)
- + High elongation
- + High tearing strength

- + Steam
- + ETO
- + Formaldehyde
- + Gas plasma
- ✗ Gamma



## Crêpe Sensitive



MOQ might apply to specific article codes. All combinations/sizes can be discussed.

Article no.	Description	Weight	Colour	Box qty	Size
3FPAP320808	Crêpe Sensitive	60 g/m <sup>2</sup>	White	504	60 x 60 cm

Article no.	Description	Weight	Colour	Box qty	Size
3FPAP320805	Crêpe Sensitive	60 g/m <sup>2</sup>	Blue	256	75 x 75 cm
3FPAP320806	Crêpe Sensitive	60 g/m <sup>2</sup>	Blue	256	90 x 90 cm



## Interwrap



All Interwrap materials are alcohol repellent.

MOQ might apply to specific article codes. All combinations/sizes can be discussed.

Article no.	Description	Weight	Colour	Box qty	Size
3FVLI330801	Interwrap 335	52 g/m <sup>2</sup>	Blue	500	50 x 50 cm
3FVLI330802	Interwrap 335	52 g/m <sup>2</sup>	Blue	256	90 x 90 cm
3FVLI330803	Interwrap 335	52 g/m <sup>2</sup>	Blue	256	100 x 100 cm

Article no.	Description	Weight	Colour	Box qty	Size
3FVLI350801	Interwrap 340	57 g/m <sup>2</sup>	Green	504	50 x 50 cm
3FVLI350803	Interwrap 340	57 g/m <sup>2</sup>	Green	256	75 x 75 cm
3FVLI350804	Interwrap 340	57 g/m <sup>2</sup>	Green	256	90 x 90 cm
3FVLI350805	Interwrap 340	57 g/m <sup>2</sup>	Green	256	100 x 100 cm
3FVLI350806	Interwrap 340	57 g/m <sup>2</sup>	Green	152	120 x 120 cm

Article no.	Description	Weight	Colour	Box qty	Size
3FVLI352801	Interwrap 350	67 g/m <sup>2</sup>	Blue	500	50 x 50 cm
3FVLI352803	Interwrap 350	67 g/m <sup>2</sup>	Blue	200	100 x 100 cm



## Secu-Wrap



Secu-Wrap Regular is also available in Green

MOQ might apply to specific article codes. All combinations/sizes can be discussed.

Article no.	Description	Weight	Colour	Box qty	Size
3FSMS355805	Secu-Wrap Standard	37 g/m <sup>2</sup>	Blue	200	75 x 75 cm
3FSMS355806	Secu-Wrap Standard	37 g/m <sup>2</sup>	Blue	160	90 x 90 cm
3FSMS355807	Secu-Wrap Standard	37 g/m <sup>2</sup>	Blue	160	100 x 100 cm
3FSMS355808	Secu-Wrap Standard	37 g/m <sup>2</sup>	Blue	120	120 x 120 cm
3FSMS355810	Secu-Wrap Standard	37 g/m <sup>2</sup>	Blue	104	140 x 140 cm

Article no.	Description	Weight	Colour	Box qty	Size
3FSMS361803*	Secu-Wrap Regular	47 g/m <sup>2</sup>	Blue	200	75 x 75 cm
3FSMS361804*	Secu-Wrap Regular	47 g/m <sup>2</sup>	Blue	120	90 x 90 cm
3FSMS361805*	Secu-Wrap Regular	47 g/m <sup>2</sup>	Blue	120	100 x 100 cm
3FSMS361806*	Secu-Wrap Regular	47 g/m <sup>2</sup>	Blue	120	120 x 140 cm

Article no.	Description	Weight	Colour	Box qty	Size
3FSMS363804	Secu-Wrap Heavy duty	55 g/m <sup>2</sup>	Blue	120	100 x 100 cm
3FSMS363805	Secu-Wrap Heavy duty	55 g/m <sup>2</sup>	Blue	104	120 x 120 cm
3FSMS363806	Secu-Wrap Heavy duty	55 g/m <sup>2</sup>	Blue	64	140 x 140 cm

Article no.	Description	Weight	Colour	Box qty	Size
3FSMS366803	Secu-Wrap All-in-one	80 g/m <sup>2</sup>	Blue/Green	120	75 x 75 cm
3FSMS366804	Secu-Wrap All-in-one	80 g/m <sup>2</sup>	Blue/Green	104	90 x 90 cm
3FSMS366805	Secu-Wrap All-in-one	80 g/m <sup>2</sup>	Blue/Green	104	100 x 100 cm
3FSMS366807	Secu-Wrap All-in-one	80 g/m <sup>2</sup>	Blue/Green	80	120 x 120 cm



## Meatex



MOQ might apply to specific article codes. All combinations/sizes can be discussed.

Article no.	Description	Weight	Colour	Box qty	Size
3FSMS355853	Meatex Standard	37 g/m <sup>2</sup>	Blue	200	90 x 90 cm
3FSMS355855	Meatex Standard	37 g/m <sup>2</sup>	Blue	160	100 x 100 cm
3FSMS355856	Meatex Standard	37 g/m <sup>2</sup>	Blue	120	120 x 120 cm
3FSMS355858	Meatex Standard	37 g/m <sup>2</sup>	Blue	104	140 x 140 cm

Article no.	Description	Weight	Colour	Box qty	Size
3FSMS361853	Meatex Regular	47 g/m <sup>2</sup>	Blue	200	90 x 90 cm
3FSMS361854	Meatex Regular	47 g/m <sup>2</sup>	Blue	120	100 x 100 cm
3FSMS361855	Meatex Regular	47 g/m <sup>2</sup>	Blue	120	120 x 120 cm
3FSMS361863	Meatex Regular	47 g/m <sup>2</sup>	Green*	200	75 x 75 cm
3FSMS361865	Meatex Regular	47 g/m <sup>2</sup>	Green*	120	100 x 100 cm
3FSMS361866	Meatex Regular	47 g/m <sup>2</sup>	Green*	120	120 x 120 cm

Article no.	Description	Weight	Colour	Box qty	Size
3FSMS363853	Meatex Heavy duty	55 g/m <sup>2</sup>	Blue	120	75 x 75 cm
3FSMS363854	Meatex Heavy duty	55 g/m <sup>2</sup>	Blue	120	90 x 90 cm
3FSMS363855	Meatex Heavy duty	55 g/m <sup>2</sup>	Blue	120	100 x 100 cm
3FSMS363856	Meatex Heavy duty	55 g/m <sup>2</sup>	Blue	104	120 x 120 cm

Article no.	Description	Weight	Colour	Box qty	Size
3FSMS367801	Meatex Xtreme	75 g/m <sup>2</sup>	Blue	120	75 x 75 cm
3FSMS367802	Meatex Xtreme	75 g/m <sup>2</sup>	Blue	104	90 x 90 cm
3FSMS367803	Meatex Xtreme	75 g/m <sup>2</sup>	Blue	104	100 x 100 cm
3FSMS367804	Meatex Xtreme	75 g/m <sup>2</sup>	Blue	80	120 x 120 cm



## Interleaved wrapping, with Interwrap as outer layer

MOQ might apply to specific article codes. All combinations/sizes can be discussed.

		Inner/Green sheet			
		Crêpe White	Interwrap 340 Green	Interwrap 350 Green	
		60 g/m <sup>2</sup>	57 g/m <sup>2</sup>	67 g/m <sup>2</sup>	
Outer/Blue sheet	Interwrap 335 Blue 52 g/m <sup>2</sup>	60 x 60 cm	3FITL390704 504 pcs	3FITL342802 504 pcs	
		75 x 75 cm	3FITL390706 256 pcs	3FITL342804 256 pcs	
		90 x 90 cm	3FITL390707 256 pcs	3FITL342806 256 pcs	
		100 x 100 cm	3FITL390708 256 pcs	3FITL342808 200 pcs	
		120 x 120 cm	3FITL390710 152 pcs	3FITL342810 160 pcs	
	Interwrap 340 Blue 57 g/m <sup>2</sup>	60 x 60 cm	3FITL390802 504 pcs		
		75 x 75 cm	3FITL390804 256 pcs	3FITL344802 256 pcs	
		90 x 90 cm	3FITL390806 200 pcs		
		100 x 100 cm	3FITL390808 200 pcs	3FITL344804 200 pcs	
		120 x 120 cm	3FITL390810 160 pcs	3FITL344806 160 pcs	
	Interwrap 350 Blue 67 g/m <sup>2</sup>	60 x 60 cm			
		75 x 75 cm	3FITL390902 256 pcs	3FITL346802 256 pcs	3FITL348802 256 pcs
		90 x 90 cm		3FITL346804 256 pcs	
		100 x 100 cm	3FITL390904 200 pcs	3FITL346806 256 pcs	3FITL348804 200 pcs
		120 x 120 cm	3FITL390909 152 pcs	3FITL346810 152 pcs	3FITL348806 152 pcs



## Interleaved wrapping, with Secu-Wrap as outer layer

MOQ might apply to specific article codes. All combinations/sizes can be discussed.

			Inner/Green sheet		
			Interwrap 340 Green 57 g/m <sup>2</sup>	Secu-Wrap Regular Green 47 g/m <sup>2</sup>	Secu-Wrap Regular Green 47 g/m <sup>2</sup> <b>Ecobox</b>
Outer/Blue sheet	Secu-Wrap Standard Blue 37 g/m <sup>2</sup>	60 x 60 cm			
		75 x 75 cm		3FITL382842 224 pcs	
		90 x 90 cm			
		100 x 100 cm			
		120 x 120 cm			
	Secu-Wrap Regular Blue 47 g/m <sup>2</sup>	60 x 60 cm			
		75 x 75 cm			
		90 x 90 cm			
		100 x 100 cm			
		120 x 120 cm			
	Secu-Wrap Heavy Duty Blue 55 g/m <sup>2</sup>	60 x 60 cm	3FITL374820 256 pcs	3FITL384802 504 pcs	3FITL384821 7200 pcs
		75 x 75 cm	3FITL374822 240 pcs	3FITL384804 120 pcs	
		90 x 90 cm	3FITL374826 200 pcs	3FITL384806 120 pcs	
		100 x 100 cm	3FITL374828 200 pcs	3FITL384808 120 pcs	3FITL384827 2400 pcs
		120 x 120 cm	3FITL374832 144 pcs	3FITL384810 112 pcs	3FITL384829 1568 pcs
	Secu-Wrap All-in-One Blue 80 g/m <sup>2</sup>	60 x 60 cm			
		75 x 75 cm			
		90 x 90 cm			
		100 x 100 cm	3FITL378802 120 pcs		
		120 x 120 cm	3FITL378804 120 pcs		



## Interleaved wrapping, with Meatex as outer layer

MOQ might apply to specific article codes. All combinations/sizes can be discussed.

			Inner/Green sheet				
			Interwrap 340 green 57 g/m <sup>2</sup>	Secu-Wrap Regular green 47 g/m <sup>2</sup>	Meatex Regular green 47 g/m <sup>2</sup>	Secu-Wrap Regular green 47 g/m <sup>2</sup> <b>Ecobox</b>	Meatex Regular green 47 g/m <sup>2</sup> <b>Ecobox</b>
Outer/Blue sheet	Meatex Standard Blue 37 g/m <sup>2</sup>	60 x 60 cm			3FITL382820 480 pcs		
		75 x 75 cm			3FITL382822 200 pcs		
		90 x 90 cm			3FITL382826 200 pcs		
		100 x 100 cm		3FITL382802 120 pcs	3FITL382828 120 pcs		
		120 x 120 cm		3FITL382804 120 pcs	3FITL382832 120 pcs		
	Meatex Regular Blue 47 g/m <sup>2</sup>	60 x 60 cm			3FITL383804 480 pcs		
		75 x 75 cm	3FITL372802 240 pcs		3FITL383808 200 pcs		3FITL383811 6000 pcs
		90 x 90 cm	3FITL372804 200 pcs		3FITL383812 200 pcs		
		100 x 100 cm	3FITL372806 144 pcs		3FITL383814 120 pcs		3FITL383818 2400 pcs
		120 x 120 cm	3FITL372808 120 pcs		3FITL383822 144 pcs		3FITL383825 2100 pcs
	Meatex Heavy Duty Blue 55 g/m <sup>2</sup>	60 x 60 cm			3FITL384820 480 pcs		3FITL384819 7200 pcs
		75 x 75 cm	3FITL374802 240 pcs		3FITL384822 180 pcs		
		90 x 90 cm	3FITL374804 200 pcs		3FITL384824 120 pcs	3FITL384883 2520 pcs	
		100 x 100 cm	3FITL374806 120 pcs		3FITL384826 144 pcs		3FITL384825 2400 pcs
		120 x 120 cm	3FITL374808 120 pcs		3FITL384828 120 pcs	3FITL384889 1960 pcs	3FITL384835 1960 pcs
	Meatex Xtreme Blue 75 g/m <sup>2</sup>	60 x 60 cm					
		75 x 75 cm	3FITL377802 120 pcs		3FITL387802 120 pcs		
		90 x 90 cm			3FITL387804 120 pcs		
		100 x 100 cm	3FITL377804 120 pcs	3FITL388806 120 pcs	3FITL387806 120 pcs		3FITL387807 1600 pcs
		120 x 120 cm	3FITL377806 120 pcs	3FITL388810 120 pcs	3FITL387810 120 pcs		3FITL387811 1800 pcs





## Twin-Wrap

Over the years many CSSD's have transitioned from using sequential (separate or interleaved sheets of blue and green) wraps to using sealed wraps for "1 phase packing" instead of "2 phase packaging. Advantages include a reduction of the time needed for wrapping sets, as well as significantly reducing the physical stress for the CSSD technician due to reduced handling. With additional training on how to assure aseptic presentation, sealed wrapping can be a good option.

In 2020 Interster International greatly expanded their Twin-Wrap portfolio, and now offers a complete range of weight combinations for all set sizes and weights. Anything from light sets up to very heavy sets can now be packed safely with sealed materials of an appropriate strength.

- + Cost-efficient solution reducing processing time
- + Reduces physical strain for CSSD staff
- + Now available without MOQ in a wide range of sizes and weights
- + Suitable for plasma (VH202) sterilisation



## Standard Twin-Wrap assortment

MOQ might apply to specific article codes. All combinations/sizes can be discussed.

			Green Layer (sealed)	
			SMMS Regular Green 47 g/m <sup>2</sup>	Twin-Wrap number & strength indication:
Outer/Blue layer (sealed)	SMMS Standard Blue 37 g/m <sup>2</sup>	60 x 60 cm	3FDOP380902 240 units	Twin-Wrap 2; for light weight sets
		75 x 75 cm	3FDOP380904 240 units	Twin-Wrap 2; for light weight sets
		90 x 90 cm	3FDOP380906 100 units	Twin-Wrap 2; for light weight sets
		100 x 100 cm	3FDOP380908 72 units	Twin-Wrap 2; for light weight sets
		120 x 120 cm	3FDOP380910 72 units	Twin-Wrap 2; for light weight sets
		140 x 140 cm	3FDOP380912 72 units	Twin-Wrap 2; for light weight sets
	SMMS Regular Blue 47 g/m <sup>2</sup>	60 x 60 cm	3FDOP382902 240 units	Twin-Wrap 3; for medium weight sets
		75 x 75 cm	3FDOP382904 240 units	Twin-Wrap 3; for medium weight sets
		90 x 90 cm	3FDOP382906 100 units	Twin-Wrap 3; for medium weight sets
		100 x 100 cm	3FDOP382908 72 units	Twin-Wrap 3; for medium weight sets
		120 x 120 cm	3FDOP382910 72 units	Twin-Wrap 3; for medium weight sets
		140 x 140 cm	3FDOP382912 72 units	Twin-Wrap 3; for medium weight sets
	SMMS Heavy Duty Blue 55 g/m <sup>2</sup>	60 x 60 cm	3FDOP384902 240 units	Twin-Wrap 4; for medium / heavy sets
		75 x 75 cm	3FDOP384904 192 units	Twin-Wrap 4; for medium / heavy sets
		90 x 90 cm	3FDOP384906 100 units	Twin-Wrap 4; for medium / heavy sets
		100 x 100 cm	3FDOP384908 56 units	Twin-Wrap 4; for medium / heavy sets
		120 x 120 cm	3FDOP384910 56 units	Twin-Wrap 4; for medium / heavy sets
		140 x 140 cm	3FDOP384912 52 units	Twin-Wrap 4; for medium / heavy sets
	SSMMS Xtreme Blue 75 g/m <sup>2</sup>	75 x 75 cm	3FDOP387802 192 units	Twin-Wrap 5; for heavy sets
		90 x 90 cm	3FDOP387804 100 units	Twin-Wrap 5; for heavy sets
100 x 100 cm		3FDOP387806 56 units	Twin-Wrap 5; for heavy sets	
120 x 120 cm		3FDOP387810 56 units	Twin-Wrap 5; for heavy sets	
140 x 140 cm		3FDOP387816 52 units	Twin-Wrap 5; for heavy sets	





## Sterile Barrier Systems - Pouches & Reels

Laminated pouches and reels are widely used in hospitals and medical institutions to form a sterile barrier system for medical devices. The film and paper combination form a high quality barrier, protecting against contamination after sterilization (when handled correctly and stored in proper conditions). The Interster Blue Seal range boasts a number of qualities that benefit both user-friendliness and patient safety.

### **Simple and safe to open**

The thumb slot (chevron) allows the laminate pouches to be more easily filled and safely and aseptically opened. The shape of the seal ensures that particle transfer is minimal when the laminate is opened. The risk of tears is minimised.

### **Includes 3 process indicators**

The see through pouches and reels have 3 process indicators namely for steam, low temperature steam formaldehyde and ethylene oxide.

### **Validation and control**

To maintain a safe and adequate sterile barrier system, the seal machine needs to be checked daily. Interster has the necessary products to check if the seal machine is working properly. Such products as the Seal Check and Liquid dye test can provide proper testing methods for this, and can be found in this catalogue. Your account manager would be happy to advice on their use.

### **Applicable standards**

ISO 11607-1 and EN 868-5

## Blue Seal pouches flat

- + Conform ISO 11607-1 and EN 868-5
- + High quality plastic film
- + Extra strong medical paper
- + 3 Type 1 process indicators
- + Available in many sizes



Article no.	Description	Box qty	Size
3FKFB210804	Blue Seal see through pouch	2000	75 x 150 mm
3FKFB210806	Blue Seal see through pouch	2000	75 x 250 mm
3FKFB210808	Blue Seal see through pouch	2000	75 x 300 mm
3FKFB210810	Blue Seal see through pouch	2000	100 x 150 mm
3FKFB210812	Blue Seal see through pouch	2000	100 x 200 mm
3FKFB210814	Blue Seal see through pouch	2000	100 x 250 mm
3FKFB210816	Blue Seal see through pouch	2000	100 x 300 mm
3FKFB210819	Blue Seal see through pouch	1000	100 x 360 mm
3FKFB210820	Blue Seal see through pouch	1000	100 x 400 mm
3FKFB210827	Blue Seal see through pouch	1000	125 x 400 mm
3FKFB210828	Blue Seal see through pouch	1000	150 x 200 mm
3FKFB210830	Blue Seal see through pouch	1000	150 x 300 mm
3FKFB210832	Blue Seal see through pouch	1000	150 x 380 mm
3FKFB210836	Blue Seal see through pouch	1000	160 x 220 mm
3FKFB210841	Blue Seal see through pouch	1000	200 x 270 mm
3FKFB210843	Blue Seal see through pouch	1000	210 x 330 mm
3FKFB210846	Blue Seal see through pouch	1000	200 x 400 mm
3FKFB210849	Blue Seal see through pouch	1000	220 x 420 mm

Article no.	Description	Box qty	Size
3FKFB210850	Blue Seal see through pouch	1000	250 x 380 mm
3FKFB210851	Blue Seal see through pouch	500	250 x 480 mm
3FKFB210854	Blue Seal see through pouch	500	270 x 450 mm
3FKFB210856	Blue Seal see through pouch	500	320 x 500 mm
3FKFB210858	Blue Seal see through pouch	500	320 x 600 mm
3FKFB210861	Blue Seal see through pouch	500	420 x 610 mm

## Blue Seal reels

- + Conform ISO 11607-1 and EN 868-5
- + High quality plastic film
- + Extra strong medical paper
- + 3 Type 1 process indicators
- + Available in many sizes
- + For long instruments



Article no.	Description	Box qty	Size
3FKFS230804	Blue Seal see through reel	1	75 mm x 200 mtr
3FKFS230806	Blue Seal see through reel	1	100 mm x 200 mtr
3FKFS230810	Blue Seal see through reel	1	150 mm x 200 mtr
3FKFS230812	Blue Seal see through reel	1	200 mm x 200 mtr
3FKFS230814	Blue Seal see through reel	1	250 mm x 200 mtr
3FKFS230816	Blue Seal see through reel	1	300 mm x 200 mtr
3FKFS230821	Blue Seal see through reel	1	400 mm x 200 mtr



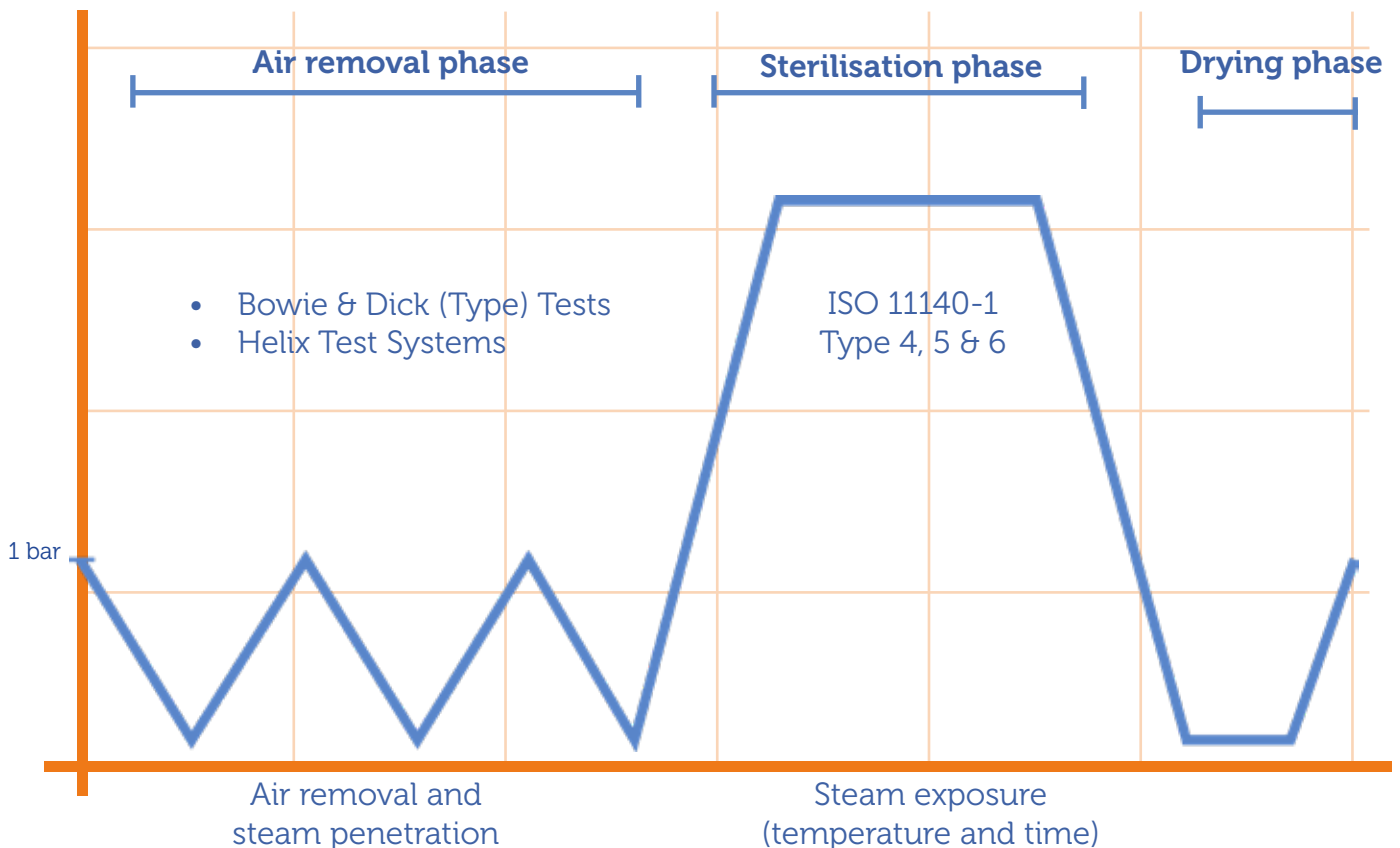
# Chemical Indicators

Chemical indicators are used to monitor whether the parameters to achieve sterilization have been met for a specific sterilization process. Chemical indicators use one or more chemicals that undergo either a physical or chemical change, that is visible to the human eye, after exposure to predetermined critical parameters such as time, temperature or pressure.

## Steam sterilisation

After loading the steriliser and closing it, the sterilisation process is started. This process consists of a preliminary phase in which air is removed from the chamber and, in several pulses, the chamber is filled with saturated steam under pressure. The sterilisation phase then starts at pre-defined time and temperature, the most common being 134 °C for 3.5 minutes. After sterilisation, the steriliser starts its drying process where the batch as well as the steriliser itself is dried.

pressure





	General description	Interster products
<b>ISO 11140-1</b> <b>Type 1:</b> <b>Process indicators</b>	Type 1 chemical indicators are also known as process indicators. These types of indicators indicate whether an instrument set has been exposed to the sterilisation process. Indication tapes and labels placed on the outside of a pack are examples of chemical indicators of type 1.	<ul style="list-style-type: none"> <li>• Sterilisation indicator tape blue</li> <li>• Sterilisation indicator tape white</li> <li>• Sterilisation labels with indicator</li> <li>• Plasma Indicator</li> </ul>
<b>ISO 11140-1</b> <b>Type 2:</b> <b>Specific Test indicators</b> <b>ISO 11140-4 or</b> <b>EN 867-5</b>	Type 2 chemical indicators are indicators for use in specific tests. These types of chemical indicators are used in specific procedures defined by sterilisation standards. For example, Bowie & Dick type tests are used for a steam steriliser with a pre-vacuum cycle to check the efficiency of air removal and steam penetration in the autoclave chamber.	<ul style="list-style-type: none"> <li>• Bowie &amp; Dick Autoclave Lean Pack</li> <li>• Bowie &amp; Dick Helix Test</li> <li>• Bowie &amp; Dick A4 Test sheet</li> <li>• Helix Test Systems</li> </ul>
<b>ISO 11140-1</b> <b>Type 4:</b> <b>Multi-Variable indicators</b>	Type 4 chemical indicators, also known as multi-variable indicators, respond to two or more critical parameters of the sterilisation process and indicate the exposure to the cycle at the indicated values of the chosen parameters. Time and temperature are examples of critical parameters that would be chosen for a steam sterilisation process.	<ul style="list-style-type: none"> <li>• Steam Monitoring Strip</li> <li>• Dual Steam Monitoring Strip</li> </ul>
<b>ISO 11140-1</b> <b>Type 5:</b> <b>Integrating indicator</b>	Type 5 chemical indicators are also known as integrating indicators or integrators. These chemical indicators are designed to respond to all critical parameters during a certain range of sterilisation cycles. The performance of Type 5 indicators has been linked to the performance of biological indicators.	<ul style="list-style-type: none"> <li>• Steam Integrating Indicator</li> </ul>
<b>ISO 11140-1</b> <b>Type 6:</b> <b>Emulating indicators</b>	Type 6 chemical indicators are known as Cycle Specific Indicators and are designed to respond to all critical parameters for specified sterilisation cycles. For example, each Type 6 chemical indicator for steam sterilisation monitors the specific temperature and time of a selected sterilisation cycle.	<ul style="list-style-type: none"> <li>• Steam Emulating Indicators</li> </ul>





## Type 1 indicators

Interster's Type 1 indicators can be found on a number of our traceability products. For more information see the accessories section.

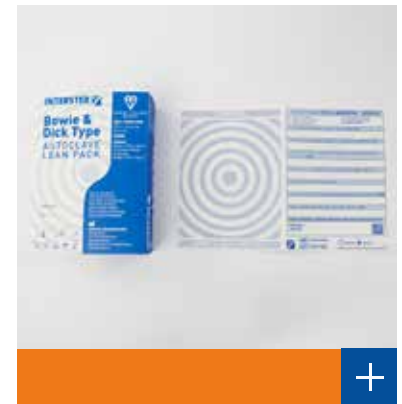




## Type 2 indicators - Bowie & Dick type tests

### Bowie & Dick Type Autoclave Test Pack ("Lean Pack")

- + BSI kitemark certified
- + Daily test
- + Conform ISO-11140-1+4
- + Test sheet stays flat
- + All information on one side



### Reusable Bowie & Dick type test kit/Bowie & Dick Helix test

- + For use as daily Bowie & Dick test, not as batch control test/helix test
- + Highly cost-effective Bowie & Dick type test solution
- + Self adhesive strip for easy archiving
- + Aluminium case
- + Conform ISO-11140-4
- + 250 chemical indicator strips
- + One set of gloves
- + Convenient to store and easy to use



Article no.	Description	Box qty	Stated values
3FSKS610860	Bowie & Dick Type Autoclave Lean Pack (BSI)	20	3.5 min./134°C
3FSKS615806	Bowie & Dick A4 Test Sheet	100	3.5 min./134°C
3FSKS613801	Bowie & Dick Helix Test	250	3.5 min./134°C



## Type 2 indicators - Batch Monitoring Systems

### Helix Test System

- + Conform ISO 11140-1 (Type 2) and EN 867-5
- + Self adhesive strip for easy archiving
- + Made of PTFE
- + Ideal system for worst case test
- + 1.5 meter tube



Article no.	Description	Box qty	Stated values
3FSKS630804	Helix Test System - 1 tube + 400 test strips	400	3.5 min./134°C - 15 min./121°C
3FSKS630806	Helix Test System - 1 tube + 400 test strips	400	5.3 min./134°C - 15 min./121°C
3FSKS630808	Helix Test System - 1 tube + 100 test strips	100	7 min./134°C - 20 min./121°C
3FSKS630812	Helix Prion Test System - 1 tube + 250 strips	250	18 min./134°C





## Type 4 indicators

### Steam Dual Monitoring Strip

- + ISO 11140-1 Type 4
- + Perforated strip with two tests
- + Optimized layout and size
- + Easy to assess due to reference color bar
- + Less likely to curl



Article no.	Description	Box qty	Stated values
3FSKS645806	Steam Monitoring Indicator	250	3.5 min./134°C - 15 min./121°C
3FSKS645816	Steam Dual Monitoring Strip	250	3.5 min./134°C - 15 min./121°C

## Type 5 indicator

### Steam Integrating Indicator

- + Conform ISO-11140-1 for Type 5 indicators
- + With stated values For 121 °C - 134 °C & 135 °C
- + Checks all critical parameters (steam, temperature and time)



Article no.	Description	Box qty	Stated values
3FSKS646802	Steam Integrating Indicator	250	5,3 min./134°C - 16.5 min./121°C - 5,0 min./135°C



## Type 6 indicators

### Steam Emulating Indicator

- + Conform ISO-11140-1 (Type 6)
- + Non-toxic and lead free
- + Available for several states values
- + Also available with self adhesive for easy archiving
- + Also available as Steam Dual Emulating Indicator



Article no.	Description	Box qty	Stated values
3FSKS645818	Steam Emulating Indicator	250	3.5 min./134°C; 15 min./121°C
3FSKS645819	Steam Emulating Indicator	100	3.5 min./134°C; 15 min./121°C
3FSKS645822	Steam Emulating Indicator	250	5.3 min./134°C; 15 min./121°C
3FSKS645826	Steam Emulating Indicator	250	7 min./134°C; 20 min./121°C
3FSKS645830	Steam Prion Indicator	250	18 min./134°C

Article no.	Description	Box qty	Stated values
3FSKS645814	Steam Dual Emulating Indicator	250	3.5 min./134°C; 15 min./121°C

Article no.	Description	Box qty	Stated values
3FSKS645820	Steam Emulating Indicator Self-Adhesive	250	3.5 min./134°C; 15 min./121°C





## Chemical indicators for other sterilisation methods

### Plasma Indicator

- + Conform ISO-11140-1, Type 1
- + HDPE material (polyethylene)
- + Ink changes from pink to yellow
- + For VH202 sterilisation processes
- + 3 year shelf life



### Formaldehyde Indicator

- + Conform ISO 11140-1, Type 4
- + Low temperature steam sterilisation
- + Changes from pink to green under correct circumstances
- + Monitors the critical parameters of the formaldehyde sterilisation process



### Ethylene Oxide Indicator

- + Conform ISO 11140-1, Type 4
- + Low temperature steam sterilisation
- + Changes from blue to green under correct circumstances
- + Monitors the critical parameters of the ethylene oxide sterilisation process



Article no.	Description	Box qty	Sterilisation method
3FSKS645808	Plasma indicator	250	VH202 Plasma
3FSKS645810	Formaldehyde Indicator	250	Formaldehyde
3FSKS645812	Ethylene Oxide Indicator	250	EO





## Protection & Moisture absorption

The Interster range within moisture and protection are products for protection, to dry, and transport for improving the level of hygiene at the CSSD. The products within this range have been developed to guarantee the highest possible durability and quality and are made of the best materials to protect sharp and fragile instruments, the sterilisation packaging material and to protect the user.

## Protection of the sterile barrier system

Although instruments are exposed to very extreme conditions like cleaning, disinfecting and sterilising, they can be quite delicate. To protect our valuable instruments, the sterile barrier system and the users handling the sterilized sets, Interster offers a wide range of adequate solutions for additional safety and protection.

### Dust Cover

Dust Covers are well known products in the world of sterilisation. When products are placed in a Dust Cover, they have an extra protection layer during transportation. In this way the Dust Cover extends the shelf life of sterile medical devices.

- + Conform EN-ISO 11607-1
- + High quality, no particle release
- + Available in 7 sizes
- + Self-sealing



Article no.	Description	Box qty	Size
3FSSV510402	Dust Cover	500	155 x 250 mm
3FSSV510404	Dust Cover	500	195 x 300 mm
3FSSV510406	Dust Cover	500	250 x 375 mm
3FSSV510408	Dust Cover	250	295 x 500 mm
3FSSV510410	Dust Cover	250	425 x 560 mm
3FSSV510412	Dust Cover	250	395 x 750 mm
3FSSV510414	Dust Cover	200	595 x 750 mm

### Silicone Mat

By using the silicone mat the packed instrument sets are protected against unsudden movements of the means of transport. Because of the silicone structure the instrument sets will not move or shift in the sterilization basket, thus reducing the risk of damages or pinholes for the sterilization packaging material.

- + 100% silicone
- + Reusable
- + Can withstand thermal and chemical disinfection
- + Can be sterilized



Article code	Description	Box qty	Size
3FEDS842826	Siliconen Mat	100	280 x 540 mm





### Instru Protector Small

The Instru Protector Small is suitable for small critical surgical instruments e.g. needles and scissors.

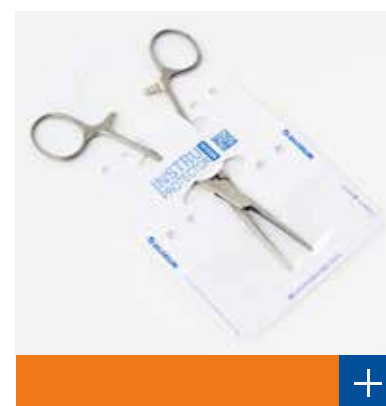
- + Manufactured from 170 g/m<sup>2</sup> medical paper
- + Including a transparent pocket for a clear view
- + Printed on the edges to prevent contact with instruments
- + Printed in offset, not toxic and acid free ink
- + For small size instruments



### Instru Protector Medium

To protect sharp and fragile instruments, the sterilisation packaging material and to protect the user. Since the Instru Protectors are integrated with a medical device, a batch number is printed on each protector for full traceability.

- + Manufactured from 170 g/m<sup>2</sup> medical paper
- + Including a transparent pocket for a clear view
- + Printed on the edges to prevent contact with instruments
- + Printed in offset, not toxic and acid free ink
- + For medium size instruments



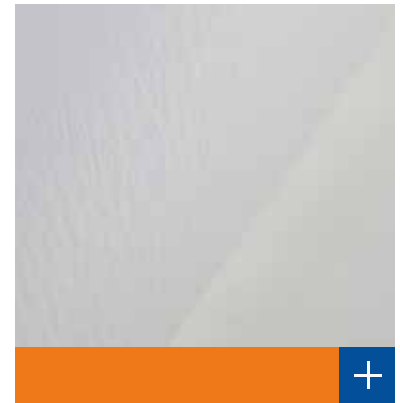
Article no.	Description	Box qty	Size
3FSZB730802	Instru Protector Small	100	51 mm x 127 mm
3FSZB730804	Instru Protector Medium	100	90 mm x 168 mm



### Tray Liner Plus

Cellulose lining for instrument trays to prevent damaging of contents as well as to protect the sterilisation packaging material. Superfluous moisture/condensate will be absorbed by the Tray Liner allowing it to evaporate during in the drying phase, reducing the occurrence of wet loads.

- + Manufactured from cellulose fibers
- + High absorption qualities
- + Made from 110 g/m<sup>2</sup> crêped paper
- + Sterilisation methods; steam, EO, formaldehyde, gamma



### Tray Liner Extra Protection

Is also placed underneath the instrument tray for complete protection. This Tray Liner offers extra protection because of its foldable edges which cover the sides of the tray which protects the instruments. It shares the exact same absorption properties as the Tray liner plus.

- + Manufactured from cellulose fibers
- + High absorption qualities
- + Made from 110 g/m<sup>2</sup> crêped paper
- + Sterilisation methods; steam, EO, formaldehyde, gamma
- + Protection lids on the sides



Article no.	Description	Box qty	Size
3FTSZ420850	Tray Liner Plus	2000	250 x 320 mm
3FTSZ420852	Tray Liner Plus	500	500 x 350 mm
3FTSZ420854	Tray Liner Plus	1000	500 x 280 mm
3FTSZ420856	Tray Liner Plus	500	550 x 350 mm
3FTSZ420860	Tray Liner Plus	1000	300 x 410 mm
3FTSZ420864	Tray Liner Plus	500	600 x 400 mm
3FTSZ420866	Tray Liner Plus	500	500 x 400 mm
3FTSZ420868	Tray Liner Plus	500	320 x 440 mm
3FTSZ420870	Tray Liner Plus	500	500 x 250 mm

Article no.	Description	Box qty	Size
3FTSZ420880	Tray liner Extra Protection	500	250 x 250 x 50 mm
3FTSZ420882	Tray liner Extra Protection	500	480 x 250 x 50 mm
3FTSZ420884	Tray liner Extra Protection	500	500 x 305 x 50 mm



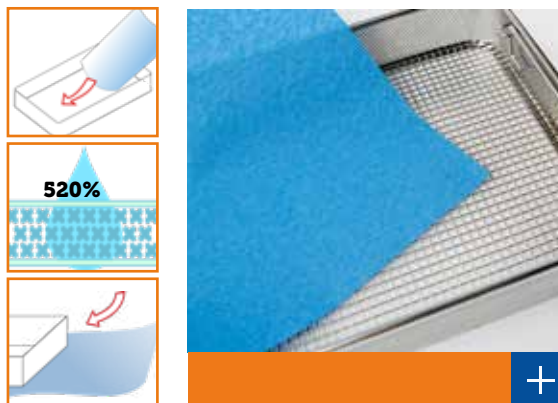
## Moisture absorption and protection

Especially with older sterilizers, or with challenging loads there is a high likelihood of moisture/condensates leading to so-called wet loads. Any set that comes from the sterilizers that is not 100% dry should be considered to be non-sterile and should therefore be re-processed. This issue can be reduced by using the right materials. A new generation of these materials offers both optimal protection of your set and the user, and also offers superior moisture management through outstanding absorption.

### Innerlayer Blue (soaker sheets)

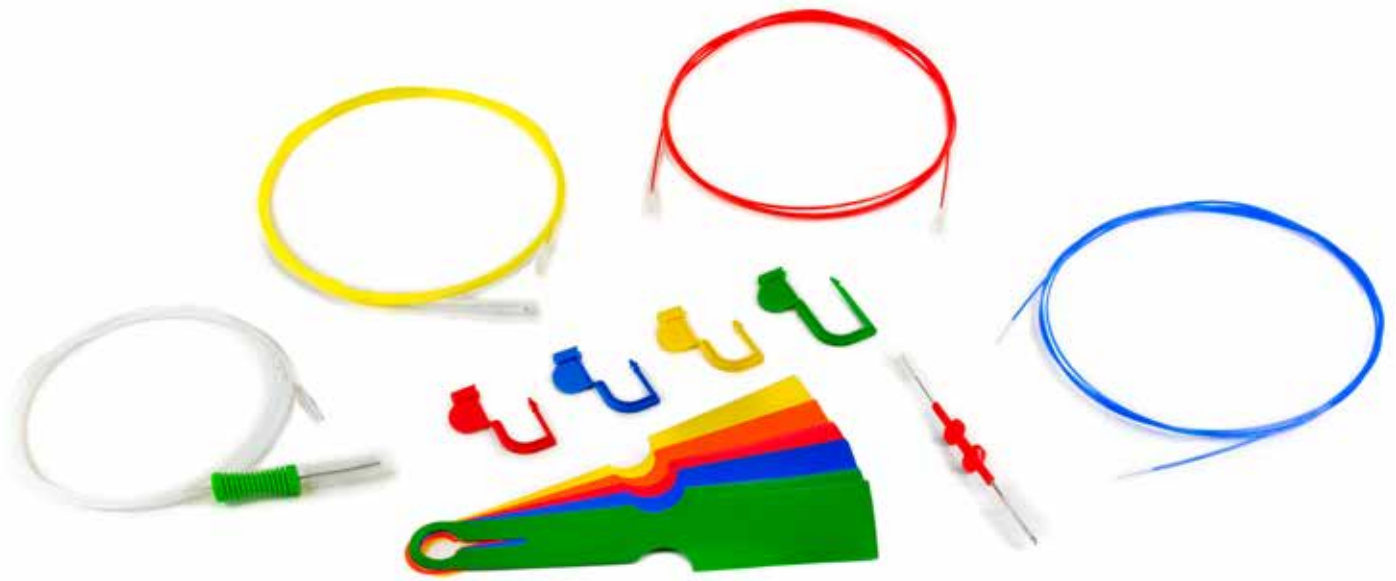
The Innerlayer Blue soaker sheets are developed to prevent wet loads after sterilisation. The soaker sheets absorb excessive fluids and keep the load dry. The Innerlayer Blue is mainly designed to be placed inside the instrument tray.

- + Manufactured from 72 g/m<sup>2</sup> non-woven material
- + Highly absorbent, 520% of its own weight



Article no.	Description	Box qty	Size
3FCZB440802	Innerlayer Blue (soaker sheet)	1000	250 x 320 mm
3FCZB440804	Innerlayer Blue (soaker sheet)	1000	300 x 360 mm
3FCZB440806	Innerlayer Blue (soaker sheet)	1000	400 x 500 mm
3FCZB440808	Innerlayer Blue (soaker sheet)	1000	500 x 280 mm
3FCZB440810	Innerlayer Blue (soaker sheet)	1000	250 x 280 mm
3FCZB440812	Innerlayer Blue (soaker sheet)	1000	500 x 350 mm
3FCZB440814	Innerlayer Blue (soaker sheet)	1000	600 x 300 mm
3FCZB440816	Innerlayer Blue (soaker sheet)	1000	130 x 280 mm





## CSSD & Endoscopy accessories

The accessories are a range of products which complement the CSSD or when cleaning endoscopes. Interster offers specialised accessories for the CSSD and for endoscopes.

### **CSSD accessories**

These products are manufactured from the best materials and are durable in use. All this to provide the user with accessories for daily use of proper registration of the processes within the CSSD.

### **Endoscopy**

For the endoscopy range Interster has a wide variety of brushes and other accessories to enhance the safety and comfort in cleaning and preparing endoscopes.

## Endoscopy accessories

Endoscopes are complex and require a different approach than other medical instruments. It is very important to properly carry out the pre-cleaning with the corresponding products. A clean endoscope starts with removing the visible dirt by cleaning thoroughly. A complex set of instruments needs different brushes. For the safety of the patient and staff and the effectiveness of the process, the use of the right product is essential.

### Interster Endoscope Brushes

Interster has its own assortment of brushes specifically for cleaning endoscopes and other hollow instruments. For correct use and effective cleaning the right brushes must be used.

- + Each brush packaged seperately
- + High quality brushes for intensive use
- + Available in many different lengths and sizes



Article no.	Description**	Length	Brush length	Channel diameter	Box qty	Color
3FRIN550730	Double ended brush	1000 mm	12 mm	1.2 – 1.5 mm	50	yellow
3FRIN550763	Double ended brush	2300 mm	15 mm	1.2 – 1.8 mm	50	red
3FRIN550735	Double ended brush	2300 mm	20 mm	1.2 – 1.5 mm	50	white
3FRIN550732	Double ended brush	1000 mm	15 mm	2.0 – 2.8 mm	50	white
3FRIN550731	Double ended brush	1200 mm	15 mm	2.0 – 2.4 mm	50	blue
3FRIN550764	Double ended brush	2300 mm	20 mm	2.0 – 2.8 mm	50	blue
3FRIN550761*	Double ended brush	2300 mm	20 mm	2.8 – 4.2 mm	50	yellow
3FRIN550765	Double ended brush	2300 mm	20 mm	2.8 – 4.2 mm	50	red
3FRIN550723	Double ended	2300 mm	20 mm	2.8 – 4.5 mm	50	turquoise
3FRIN550725	Double ended	3600 mm	20 mm	2.8 – 4.5 mm	50	turquoise
3FRIN550737	Double ended/valve brush	2300 mm	30 mm + 23.5 mm	2.8 – 4.5 mm	50	turquoise

\* Tube diameter differs from 3FRIN550765, 2.3 mm

### Pipe Cleaner Brush

A channel brush on one side and a pipe cleaner on the other side.

- + Each brush packaged seperately
- + High quality brushes for intensive use
- + Pipe cleaner made of soft polypropylene



### Valve Grip Brush

This brush with a green handle has a channel brush on one side and a valve brush on the other side.

- + Each brush packaged seperately
- + High quality brushes for intensive use
- + Two-in-one with ergonomic grip



### Valve Brush

Double ended valve brush.

- + Each brush packaged seperately
- + High quality brushes for intensive use



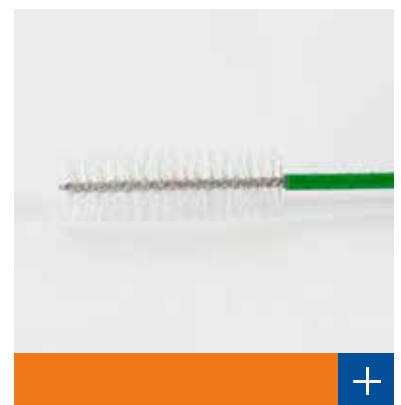
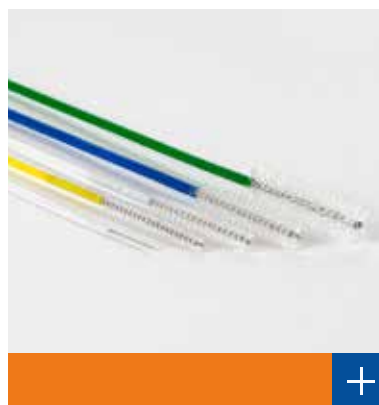
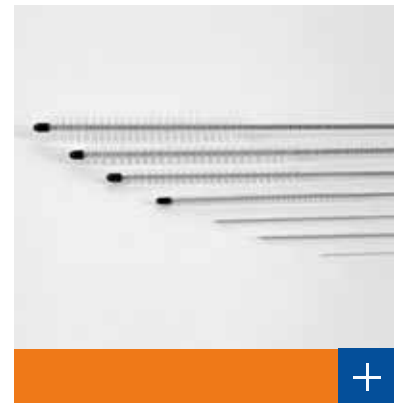
Article no.	Description	Length	Brush length	Channel diameter	Color
3FRIN550774	Pipe cleaner brush	2300 mm	20 mm (brush)/ 310 mm (pipe cleaner)	2.0 – 4.0 mm	yellow
3FRIN550775	Pipe cleaner brush	2300 mm	20 mm (brush)/ 300 mm (pipe cleaner)	2.0 – 2.8 mm	blue
3FRIN550780	Valve cleaner brush	2300 mm	20 mm (brush)/ 300 mm (pipe cleaner)	2.8 – 4.2 mm	green
3FRIN550804	Valve brush	156 mm	19.5 mm / 28.5 mm		red
3FRIN550781	Port brush	100 mm	10 mm		red



### Brushes for hollow instruments

The manual (pre-)cleaning of medical devices is regulated in legislation, standards and guidelines. The KRINKO/BfArM recommendation states that, among other things, suitable, material-compatible agents that are suitable for the medical device should be used in the pre-cleaning process. Interster offers a wide range of suitable cleaning brushes for various applications and instrument types.

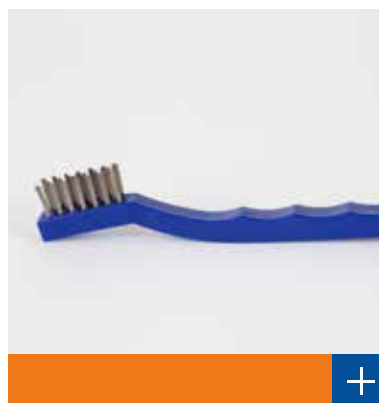
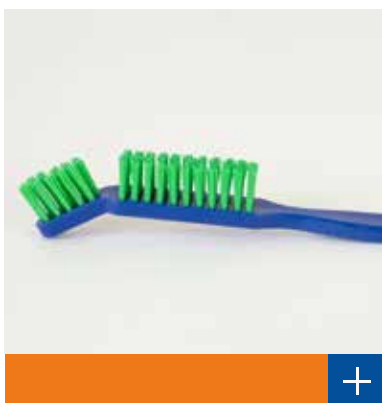
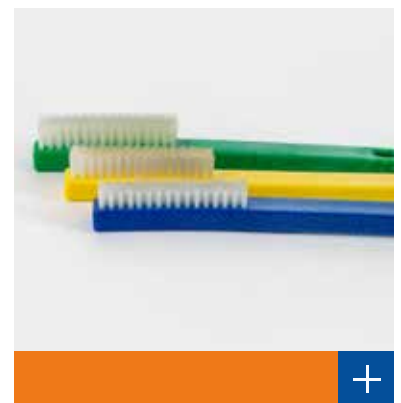
The range also includes aids such as stops and cleaning pads which further support the sterilisation process. All cleaning brushes for hollow instruments have high quality nylon bristles.



### Surface cleaning brushes

The manual (pre-)cleaning of medical devices is regulated in legislation, standards and guidelines. The KRINKO (Commission for Hospital Hygiene and Infection Prevention/BfArM (Federal Institute for Drugs and Medical Devices)) recommendation states that, among other things, suitable, material-compatible agents that are suitable for the medical device should be used in the pre-cleaning process. Interster offers a wide range of suitable cleaning brushes for various applications and instrument types.

The range also includes aids such as stops and cleaning pads which further support the sterilisation process.



## Additional accessories CSSD

During the daily work routine at the CSSD, specific accessories are used for the cleaning, disinfection and sterilization of medical devices. Our additional CSSD accessories will help you with the surface cleaning and traceability of your medical devices, which are intended to be sterilized.

### Interster Drying Towels

Moisture greatly increases the chance of growth of micro organisms, therefore removing moist is very important. The Interster drying towel is for single use and serves as a replacement to the reusable towels.

- + 60 g/m<sup>2</sup> non-woven micro fibre material
- + Very high water absorption: 850%
- + High tensile strength, does not tear
- + Absorbs 99,998% of micro organisms
- + Does not transfer micro organisms like standard cotton towels



### Sterilisation Markers

For marking sterilisation packaging material, with special autoclave low odour ink, without additor or oxylene/toluene. The ink is steam, gamma, formaldehyde, plasma and EO resistant. The pen is designed for light touch writing to avoid damage to the packaging material.

- + Sterilisation process resistant
- + Great for marking packaging labels without damaging the material
- + Low odor non-toxic ink
- + Ink dries immediately and does not fade



Article no.	Description	Box qty	Size
3FSZB790851	Interster drying towel small	320	305 x 340 mm
3FSZB790850	Interster drying towel	390	510 x 360 mm
3FSIN863716	Interster drying towel holder	1	270 x 120 x 210 mm

Article no.	Description	Box qty	Colour
3FSZB710824	Sterilisation marker	25	black
3FSZB710826	Sterilisation marker	25	blue
3FSZB710828	Sterilisation marker	25	red





## Interster Labels

Interster has a wide range of self-adhesive labels on a roll. These labels are resistant to moisture, high temperature and exposure to chemical processes. The labels retain their adhesive strength and shape during sterilisation. The glue used is latex-free and does not stain. Interster has a suitable label for every printing process.

- + With or without indicator
- + Single or "piggy-back" for registration
- + Roll diameter Ø 25, 45 and 76 mm



Article no.	Description	Type	Box qty	Length	Roll diameter
3FSKS675817	Interster label	Label + indicator + logo*	1000	102x59mm	Ø45mm
3FSKS675826	Interster label	Label + logo	1000	64x35mm	Ø25mm
3FSKS675832	Interster label	Label blank	750	98.6x55mm	Ø45mm
3FSKS675836	Interster label	Label + indicator + logo	1000	102x59mm	Ø25mm
3FSKS675838	Interster label	Label + indicator + logo	1000	102x59mm	Ø45mm
3FSKS675840	Interster label	Label PB** + indicator + logo	750	102x59mm	Ø25mm
3FSKS675842	Interster label	Label PB** + indicator + logo	750	102x59mm	Ø76mm
3FSKS675843	Interster label	Label PB** + indicator + logo*	750	102x59mm	Ø76mm
3FSKS675844	Interster label	Label PB** + indicator + logo	750	102x59mm	Ø45mm
3FSKS675846	Interster label	Label PB** blank	750	102x59mm	Ø45mm
3FSKS675847	Interster label	Label PB** blank*	750	102x59mm	Ø45mm

\* These labels can be used only on CRÊPE SENSITIVE sterilization packaging materials.

\*\* PB stands for Piggy-Back and means a labels is split in 3 parts and can be taken of the set after sterilisation.

### Medical label gun

Having and maintaining a good tracking system is essential. For smaller settings, these applicator are particularly easy to use and reliable.

- + Essential for small-scale tracking systems
- + Easy to use
- + 3 printing lines



### 3 line Steam Sterilisation Labels

The Interster 3 line Steam Sterilisation Labels are resistant to moisture, high temperatures and chemical processes. The labels retain their adhesive strength and shape during sterilisation.

- + Has a Type 1 process indicator
- + 3 lines



Article no.	Description	Box qty
3FSKS675925	3 line label gun	1
3FSKS675921	3 line Steam Sterilisation Labels	150



### Sterilisation Masking Tape

- + Manufactured from strong, crêpe paper
- + Adheres well to all SBS materials
- + Sterilisation method: steam, EO and formaldehyde



### Sterilisation Indicator Tape

- + ISO 11140-1 Type 1
- + Manufactured from strong, crêpe paper
- + Available for steam, EO and plasma
- + Environmental friendly indicator



Article no.	Description	Box qty	Width	Length
3FKLB410902	Sterilisation masking tape white	48	19 mm	50 mtr
3FKLB410904	Sterilisation masking tape white	36	25 mm	50 mtr
3FKLB410906	Sterilisation masking tape white	24	50 mm	50 mtr
3FKLB410908	Sterilisation masking tape blue	48	19 mm	50 mtr
3FKLB410910	Sterilisation masking tape blue	36	25 mm	50 mtr

Article no.	Description	Box qty	Width	Length
3FKLB410802	Steam sterilisation indicator tape white	48	19 mm	50 mtr
3FKLB410804	Steam sterilisation indicator tape white	36	25 mm	50 mtr
3FKLB410806	Steam sterilisation indicator tape blue	48	19 mm	50 mtr
3FKLB410808	Steam sterilisation indicator tape blue	36	25 mm	50 mtr

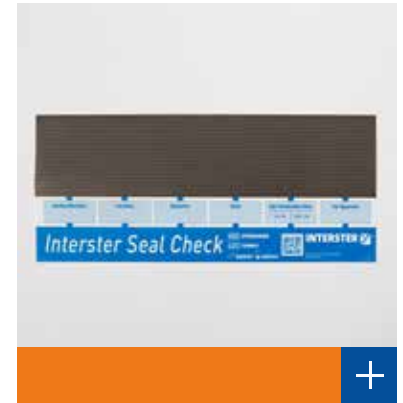
Article no.	Description	Box qty	Width	Length
3FKLB410108	EO sterilisation indicator tape beige	48	19 mm	50 mtr
3FKLB410110	Plasma sterilisation indicator tape white	12	25 mm	25 mtr



### Interster Seal Check for rotary sealer

Sterilisation pouches are made of a medical grade paper and film. This film consists of two or more layers with different melting grades. Upon sealing the sterilisation pouch, the film layer that is closest to the paper will melt first and will give an adhesion within the paper, which results in a clear and even seal.

- + Conform ISO 11607-2
- + 175 mm width to control total wheel rotation
- + Documentation possible
- + Designed to detect defects
- + Available for medical paper and Tyvek® pouches



### Liquid Control Dye Penetration Test I & II

Use this system to check the integrity of the seals. Test I is suitable for see-through packaging which consist of a film/medical paper combination and Test II is suitable for see-through packaging which consist of a film/non-woven polyolefin's (Tyvek®) combination.

- + Conform ISO11607-1 Annex B, ISO11607-2 & ASTM F1929
- + For medical paper and Tyvek®
- + Safe and easy to use



Article no.	Description	Type	Box qty	Size
3FSZB830802	Seal Check	film/medical paper	250	Width 175 mm
3FSZB830803	Tyvek® Seal Check	film/non-woven polyolefin's (Tyvek®)	125	Width 175 mm

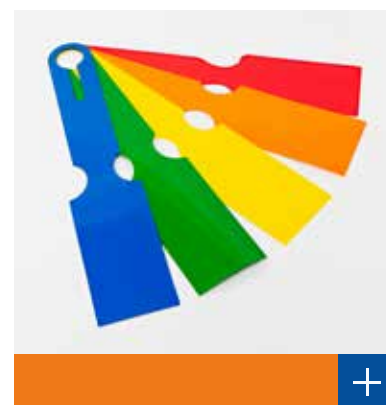
Article no.	Description	Type	Box qty
3FSZB830816	Liquid Control Test I	film/medical paper	30
3FSZB830818	Liquid Control Test II	film/non-woven polyolefin's (Tyvek®)	30



## Tray identification labels

Plastic seals consist of sterilisation-proof polypropylene and are available in a range of colours

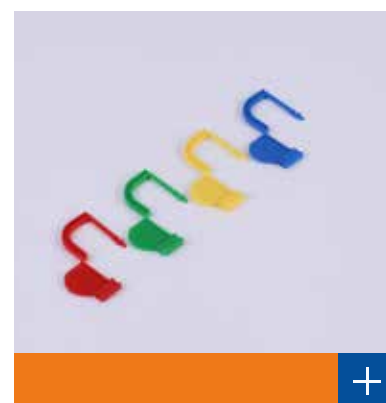
- + For easy and fast marking
- + Sorting and coding of instrument containers:
- + The sterilisation resistant Interster label is available with logo and text
- + Can be labeled with a marker or with adhesive labels



## Container seals

Plastic seals consist of sterilisation-proof polypropylene and are available in a range of colours. All standard container systems with locking loop can be made securely tamper-proof in a few simple moves. It is only possible to open the container by destroying the seal. This ensures that the sterile goods container has not been manipulated on arrival at the place of use.

- + Available in two sizes
- + Can be delivered in a number of colours
- + Easy attachment, simple to use



Article no.	Description	Colour	Box qty	Size
3FTSZ430802	Tray Label	white	1000	236 x 50 mm
3FTSZ430823	Tray Label	yellow	1000	236 x 50 mm
3FTSZ430833	Tray Label	green	1000	236 x 50 mm
3FTSZ430835	Tray Label	blue	1000	236 x 50 mm
3FTSZ430836	Tray Label	red	1000	236 x 50 mm
3FTSZ430837	Tray Label	orange	1000	236 x 50 mm

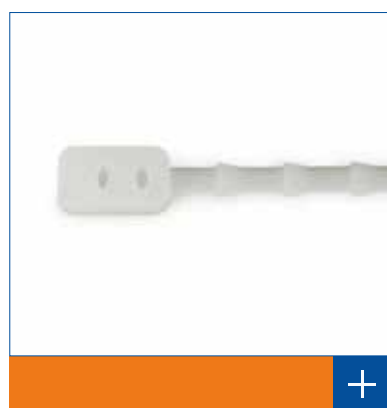
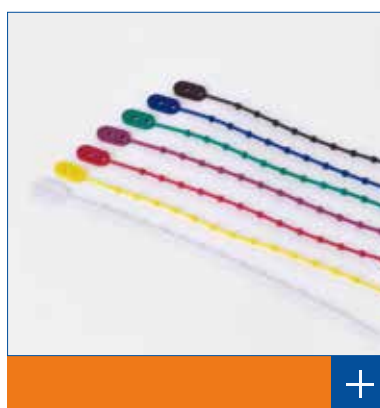
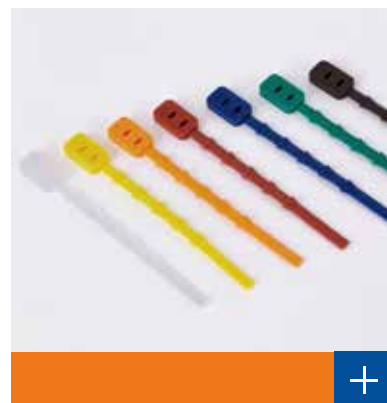
Article no.	Description	Colour	Box qty	Size
3FCZB460202	Container Seal	blue	1000	21 mm
3FCZB460204	Container Seal	red	1000	21 mm
3FCZB460206	Container Seal	green	1000	21 mm
3FCZB460208	Container Seal	yellow	1000	21 mm
3FCZB460252	Container Seal	blue	1000	32 mm
3FCZB460254	Container Seal	red	1000	32 mm
3FCZB460256	Container Seal	green	1000	32 mm
3FCZB460258	Container Seal	yellow	1000	32 mm

## Cable ties made of silicone

Our silicone cable ties are produced in compliance with the highest quality standards. They protect your instruments and create clear structures in your instrument trays, transport baskets, etc. High resistance properties ensure that all common cleaning, disinfection and sterilization processes can be used - at temperatures up to 230°C.

The design of the cable ties is designed to securely fix a wide range of diameters of instrument bundles. The silicone material has a high elasticity and therefore prevents damage to your instruments during bundling.

The silicone cable ties are available in various lengths, colours and designs to meet all requirements. All variants have locking teeth along the entire length, as well as two eyelets on each headpiece. This allows very versatile mounting options. For a better grip and easy opening, the head piece is also fitted with grooves.



## Registration Card

- + Full traceability and registration of sterilisation package
- + Room for "Sterile until" label
- + Space for Helix Test System indicator strip
- + Complies with EN-ISO 11140-1 (Type 1)
- + To store in a Documentation System Envelope



## Documentation System

- + Store daily process documentation for Bowie & Dick Test Sheet, Registration Cards, Recorder prints, Chemical indicators
- + Information of tests can be easily recorded



Article no.	Description	Box qty	Size
3FSKS645802	Registration Card	200	135 x 80 mm
3FSKS680802	Documentation System (English)	250	A4 size envelope



## Decontamination Bags

Blood and tissue dries and adheres to the instruments so that more intensive cleaning is necessary. This can be a big problem, especially with micro instruments. The Humipak decontaminatino bag is a patented method to prevent proteins from drying on the instruments while they are waiting to be cleaned.

- + Conform ISO 11607-1
- + 52g/m<sup>2</sup> blue PET/PP laminate film
- + Blue non-woven tray liner
- + Absorbent capacity of 750%
- + Adhesive strip for closing



Article no.	Description	Type	Box qty	Size
3FKFB240820	Decontamination bag	11 ml water	100	200 x 350 mm
3FKFB240822	Decontamination bag	35 ml water (half DIN)	100	420 x 430 mm
3FKFB240824	Decontamination bag	70 ml water (full DIN)	100	420 x 670 mm
3FKFB240828	Decontamination bag	110 ml water (double DIN)	50	650 x 770 mm

## Polypropylene Trays

The polypropylene trays are easy to use disposable PP trays for the CSSD or OR. The tray's can be used to store, transport or sterilize small surgical instruments or OR accessories. The trays are part of a set or can be packed a a see-through pouch or reel.

- + Available in 7 sizes
- + Can withstand steam sterilization
- + Disposable
- + Particle free



Article no.	Description	Box qty	Size
3FSZB740830	Polypropylene tray white	858	145 x 107 x 33 mm
3FSZB740832	Polypropylene tray white	630	164 x 123 x 37 mm
3FSZB740834	Polypropylene tray white	420	208 x 146 x 35 mm
3FSZB740836	Polypropylene tray white	360	208 x 146 x 40 mm
3FSZB740838	Polypropylene tray white	232	264 x 165 x 46 mm
3FSZB740840	Polypropylene tray white	160	310 x 240 x 43 mm
3FSZB740842	Polypropylene tray white	188	310 x 240 x 22 mm







## Personal Protection Equipment (PPE)

The CSSD always ensures that the patient gets sterile products to ensure that the patient health is protected. It is also important that the CSSD and OR staff itself are protected for infectious diseases. The personal protection products (PPE) of Interster ensure that the end-user is kept safe from infections and/or spreading infections.

### **Respiratory protection**

The fastest way to get infected or spread infectious diseases (like COVID19) is through the respiratory channels. To prevent this, we have the highest quality IIR surgical masks and Full Face Protection Masks (FFP2). With our masks the patient and staff are kept safe.

### **Head protection**

A average human has between 85.000 and 150.000 hairs on their head. A hair can be a source of infection and must be prevented at the CSSD and OR. The Surgical Caps of Interster come in many sizes and prevent the spread of infections.

## Surgical caps

A average human has between 85.000 and 150.000 hairs on their head. A hair can be a source of infection and must be prevented at the CSSD and OR. The Surgical Caps of Interster come in many sizes and prevent the spread of infections.

### Bonnet

- + No elastic band and easy fit
- + One-size fits all
- + Available in green

### Diana

- + Non-elastic band around the head for extra comfort
- + Tie on the back of the cap for fixing the cap on the head
- + Available in green

### Surgeon

- + A cap with a 'thin' tie around the head for easy fixing
- + The top of the cap is made from a 'thinner' viscose for more breathability
- + Available in green

### Hood

- + This cap provides the highest level of protection
- + Elastic around the facial opening for more comfort and 'ties' in the neck
- + Available in green

### Barret bouffant

- + Comfortable and high breathability because of the 15 gms spunbond PP
- + Fully covers the hairs and ears
- + Available in two colours and two sizes

### Universeel + Femina

- + Made from a strong viscose material for extra protection
- + Fully covers the hairs and ears
- + The Femina only has elastic in the back specially designed for staff with long hair
- + Available in green

Bonnet



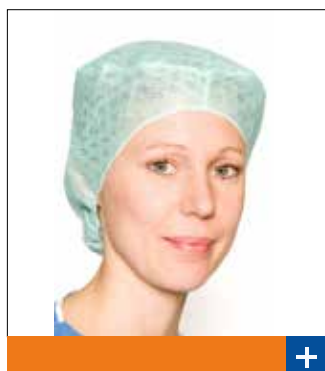
Diana



Surgeon



Universeel



Femina



Baret Bouffant



Hood



Article no.	Description	Colour	Box qty
3FPRO180702	Univeral cap	Green	10 x 50 dispenser
3FPRO180704	Baret Bouffant cap, large	White	10 x 50 dispenser
3FPRO180706	Surgeon cap	Green	10 x 50 dispenser
3FPRO180710	Hood cap	Green	10 x 50 dispenser
3FPRO180712	Bonnet cap	Green	10 x 50 dispenser
3FPRO180714	Femina cap	Green	10 x 50 dispenser
3FPRO180716	Diana cap	Green	10 x 50 dispenser
3FPRO180718	Baret Bouffant cap, medium	Blue	10 x 50 dispenser
3FPRO180720	Baret Bouffant cap, large	Blue	10 x 50 dispenser

## Surgical Masks

The IIR Surgical Masks are designed to protect patients against the spread of infectious diseases by medical personnel. The masks are designed to be used in very critical areas.

- + All masks comply to the European standard EN14683
- + All masks are IIR splash resistance
- + Available with ties or with earloops
- + Also available with visor



Article no.	Description	Colour	Box qty
3FPRO180600	IIR Surgical Mask with earloops	Blue	10 x 50 dispensers
3FPRO180602	IIR Surgical Mask with ties	Blue	6 x 40 dispensers
3FPRO180619	IIR Surgical Mask with visor	Blue	4 x 25 dispensers

## FFP2 IIR Full Face Protection Masks

Our FFP2 masks are one of the best on the market. The FFP2 masks can be used in area's where COVID19 patients are being treated and provide protection for both the end user of the masks and the patient.

- + All masks comply to the European standard EN149 & EN14683
- + All masks are IIR splash resistance
- + All masks can be worn for 8 hours
- + Comfortable for high breathability



Article no.	Description	Colour	Box qty
3FPRO180650	FFP2 Respiratory mask - Type IIR	White	10 x 50 dispensers





## Investment Solutions

Interster specialises in providing investment solutions for any CSSD for operations to run smoothly. The knowledge and experience which Interster has can relieve the logistical problems and challenges at hand.

### **Transport**

Safe and easy transport is of great importance during the entire process. Each institution has other challenges concerning storage and transport. That is why stainless steel wire baskets, instrument trays and wire grids are an essential component for safely disinfecting, sterilising, transporting and storing surgical instruments.

### **Storage**

After the sterilisation process you will have to deal with different sets that need to be stored in your sterile storage. It is important to organize the storage in an efficient and well-organized way according to your own way of working. Our stainless steel wire shelves are ideal for use in any type of storage. Because of the high production quality and availability in different versions, there is always a shelf that suits your operations.



## Stainless steel wire baskets

The stainless steel wire baskets, available in ISO and DIN dimensions, are a safe, hygienic transport and storage device for sterile packages. Wire baskets are indispensable for these specific tasks. These stainless steel baskets form the basis of the basket-in-basket system in the CSSD. There are no sharp edges or welds that can cause the packaging material to tear.

- + Made of stainless steel 304
- + Baskets are available in stackable and nestable designs
- + Available in ISO and DIN dimensions



Article no.	Description	Type	Size
3FEDS842882	T-001 Basket ISO Single Wire	Without handle	600 x 400 x 100mm
3FEDS842884	T-002 Basket ISO Single Wire	Without handle	600 x 400 x 130mm
3FEDS842886	T-003 Basket ISO Single Wire	Without handle	600 x 400 x 150mm
3FEDS842888	T-004 Basket ISO Single Wire	Without handle	600 x 400 x 200mm

Article no.	Description	Type	Size
3FEDS842890	F-001 Basket ISO Double Wire	Without handle	600 x 400 x 100mm
3FEDS842892	F-002 Basket ISO Double Wire	Without handle	600 x 400 x 130mm
3FEDS842894	F-003 Basket ISO Double Wire	Without handle	600 x 400 x 150mm
3FEDS842896	F-004 Basket ISO Double Wire	Without handle	600 x 400 x 200mm

Article no.	Description	Type	Size
3FEDS842870	B-001 Basket DIN Double Wire	With handle	600 x 300 x 138mm
3FEDS842872	B-002 Basket DIN Double Wire	With handle	600 x 300 x 150mm
3FEDS842871	B-003 Basket DIN Double Wire	With handle	300 x 300 x 138mm
3FEDS842874	F Basket DIN Single Wire	Without handle	600 x 300 x 45mm

### Stainless steel wire shelves

The stainless steel wire shelves offer an alternative to the stainless steel wire baskets. The shelves are extremely suitable for medical sterilisation devices and storing them in cupboards or racks, for example.

- + Made of stainless steel 304
- + Available either with or without handles
- + Raised edges option available
- + Available in ISO and DIN dimensions



Article no.	Description	Type	Size
3FSIN863648	P-001 Wire Shelf ISO	With handle	600 x 400 x 8,5mm
3FSIN863649	P-003 Wire Shelf DIN	With handle	600 x 300 x 9mm
3FSIN863652	P-004 Wire Shelf ISO	Without handle	600 x 400 x 44mm

### Stainless steel instrument trays

These modular stainless steel instrument trays are made from stainless steel wires. The instrument trays are electropolished and are produced according with the highest quality standards. External weld seams, openings, deformation of wires or discolouration of weld seams are not permitted.

- + Made of stainless steel 304
- + Available in DIN dimensions
- + Allows optimal steam penetration



Article no.	Description	Size
3FEDS842876	Q-001 Instrument Tray 1.0 DIN	480 x 250 x 60mm
3FEDS842878	Q-002 Instrument Tray 0.5 DIN	240 x 250 x 60mm
3FEDS842880	Q-003 Instrument Tray 0.25 DIN	120 x 250 x 60mm



## Stainless steel screen basket signs

The stainless steel screen basket signs are indispensable in every processing plant for medical devices as they help identify individual screen baskets, instruments and sets or even transport trolleys. Important information such as department affiliation, contents, barcodes and much more can be applied to the signs by means of labels, laser or etching engraving and P-Touch labels.

We offer the screen basket labels in two versions:

- + Screen basket labels
- + Clip labels

For variable fixation we offer appropriate aids, such as our silicone plugs, silicone cable ties or stainless steel key rings. The screen basket labels can also be permanently fixed by means of stainless steel screws and washers.

The stainless steel clip labels are a very convenient solution. They can be quickly and variably exchanged with the help of the clips. Alternatively, these can remain on the basket for a long time without the need for any other aids.

All screen basket labels are made of high-quality stainless steel (1.4404 or 1.4310), which offers high stability as well as excellent corrosion and chemical resistance. This way, we achieve excellent durability despite the increased daily stress in the processing plant for medical products.

All screen basket labels are suitable for the most common cleaning, disinfection and sterilization processes.



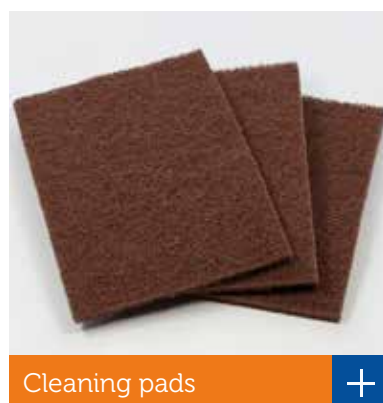
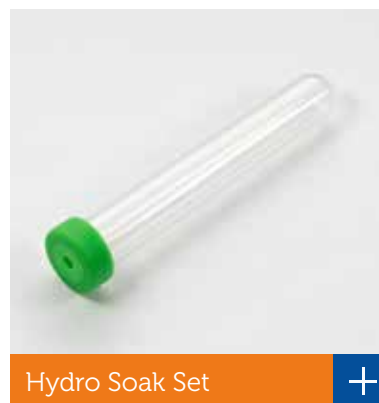
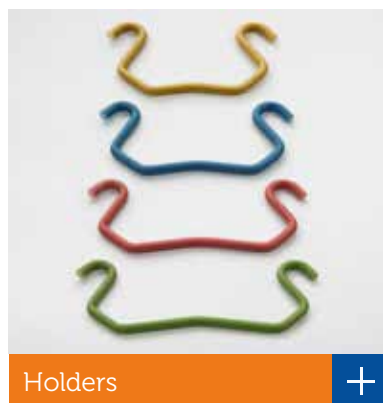
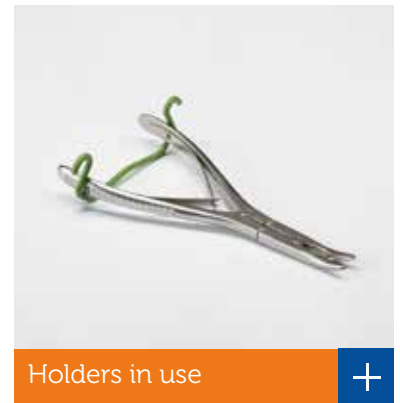
## Cleaning accessories

The cleaning accessories range serves to facilitate various CSSD cleaning processes:

Because they minimise unwashed areas missed, Interster stops are an indispensable aid to successful sterilisation. Without our aids, the cleaning and disinfection of forceps, non-demountable instruments with ring handles, specula and other non-autostop instruments is a particular challenge in critical areas such as joints or mouth parts.

The Hydro Soak Sets assist with the transport, storage and hydration of distal ends of laparoscopic instruments and EndoWrist® arms.

Due to their material properties, our cleaning pads are versatile and ideally suited for grinding, polishing rust films and oxidised surfaces such as work tables, transport trolleys or steriliser chambers. Suitable for steel, stainless steel and aluminium.







Whatever you need...

ask us



Soiled room



Clean area




Sterile storage




OR



  
**Cleaning & disinfection**



  
**Sterilisation**



  
**Sterile transport**



  
**Contaminated transport**

